

Map Notes

Southeast Texas Arc User Group



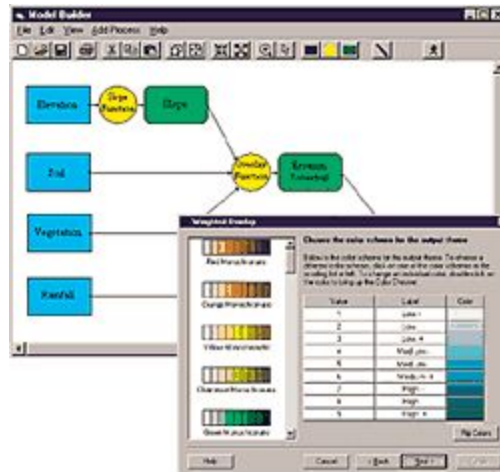
September 3, 2008

The group held its quarterly meeting at the Southeast Texas Regional Planning Commission in Beaumont. Scott LoBue, ESRI San Antonio, give a presentation on Model Builder and Updates to ArcMap 9.3. David Dignum and Nick Popovich, ESRI Houston was present to help answer questions as well.

Description from ESRI website:

ArcView Spatial Analyst users can use ModelBuilder's process wizards and diagramming tools to construct various types of spatial models. The models are represented as process flow diagrams. The flow diagrams created with ModelBuilder are not only a convenient way to construct and modify spatial models but are also an excellent way to document and present one's models to others.

ModelBuilder lets users save models and rerun them using different input data. Users can also rerun their models using different function parameters, thus enabling them to calibrate their models or examine how they perform using different sets of values. Users can copy portions of their models within a model, and smaller models can be combined to build larger models.



ModelBuilder also allows users to share their models with others. This means that organizations can develop model templates for processing specific types of data then distribute those templates to their users. New users can then add their own data to the model and run it using a consistent or prescribed modeling strategy.

ModelBuilder tools can be used to construct spatial models in any application area. For example, organizations can use the ArcView Spatial Analyst ModelBuilder to build land use suitability models, environmental sensitivity models, hazardous risk models, and social impact models. The user can also build models in which all of these spatial assessments are included in a single larger model.

ModelBuilder technology provides both beginning and advanced users with a set of easy-to-use tools for building various types of spatial models within ArcView Spatial Analyst.