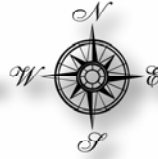


Map Notes

Southeast Texas Arc User Group



December 13, 2007

The group held its last meeting of 2007 at the MCM Elegante' Hotel in Beaumont. Twenty-three users braved the weather conditions to attend. Users representing TxDOT, City of Beaumont, Southeast Texas Regional Planning Commission, Jefferson County Tax Appraisal District, Orange County Tax Appraisal District, Hardin County Tax Appraisal District, Hancock Forest Management, ExxonMobil, Deep East Texas Council of Government, Carroll & Blackman, Inc., M.W. Whiteley & Associates, Smithcorp Real Estate Services, and WORTECH Land Surveyors, Inc. were present to hear Scott LoBue, ESRI San Antonio, give a presentation Survey Analyst Extension focusing on the Cadastral Fabric dataset/model and the new workflow of Cadastral Editor. David Dignum and Nick Popovich, ESRI Houston was present to help answer questions as well.

Description from ESRI website:

ArcGIS Survey Analyst is an ArcGIS Desktop extension that provides surveyors and GIS professionals with tools to create and maintain survey and cadastral data in ArcGIS. With this application, surveyors can centrally locate, process, and manage their data, enabling them to work more efficiently. GIS professionals use ArcGIS Survey Analyst to manage and continually enhance the accuracy of their data using existing survey methodologies.

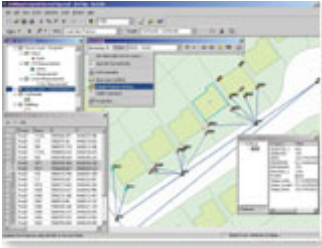


With ArcGIS Survey Analyst you can

- Reduce the time needed to maintain parcels while increasing the accuracy of cadastral data and related GIS features.
- Maintain parcel data (including record information from deeds and survey plans) in a cadastral fabric dataset. The fabric delivers a seamless coverage of your parcel boundaries and associated survey control free of gaps and overlaps.
- Create accurate parcel and subdivision data via direct data entry of the record information using specialized coordinate geometry tools. Track the history of all fabric changes.
- Use the survey (least squares) adjustment feature to accurately and incrementally update your fabric with each new survey plan. In parallel, you can also adjust related GIS layers such as building footprints, roads, and easements.
- Create, edit, and manage GIS features based on survey measurement data and survey procedures.
- Integrate survey measurements into a GIS database using field observations and survey data collector files. Manage and process survey data with a set of comprehensive tools.

- Store survey measurements, points, and computations in a GIS database for future analysis and reuse.
- Perform coordinate geometry computations.
- Perform survey computations such as traverse and least-squares adjustments using the original raw observations.
- Create custom importers and tools using a standard development environment.

ArcGIS Survey Analyst 9.2 introduced a new dataset called [Cadastral Fabric](#) and a new workflow called [Cadastral Editor](#).



ArcGIS Survey Analyst: Cadastral Fabric

Cadastral Fabric is a topologically integrated geodatabase dataset designed to store both a continuous parcel fabric that covers a jurisdiction as well as survey-based subdivision plans without loss of any information in the original survey record. Features include parcels, boundary lines, parcel corners, and control points.

ArcGIS Survey Analyst: Cadastral Editor

Using the Cadastral Editor, individual parcels and subdivisions are entered using coordinate geometry (COGO)-based plan entry. An integrated Cadastral Fabric is developed from all the parcel layer. Cadastral Editor also tracks parcel history and lineage by maintaining the legal recording dates.

After the meeting, users retired to Floyd's Cajun Seafood Restaurant to enjoy shrimp, crawfish and lots of gumbo for lunch. In other news, the user group will schedule regular quarterly meetings. Topics and locations will be announced on the user group website.